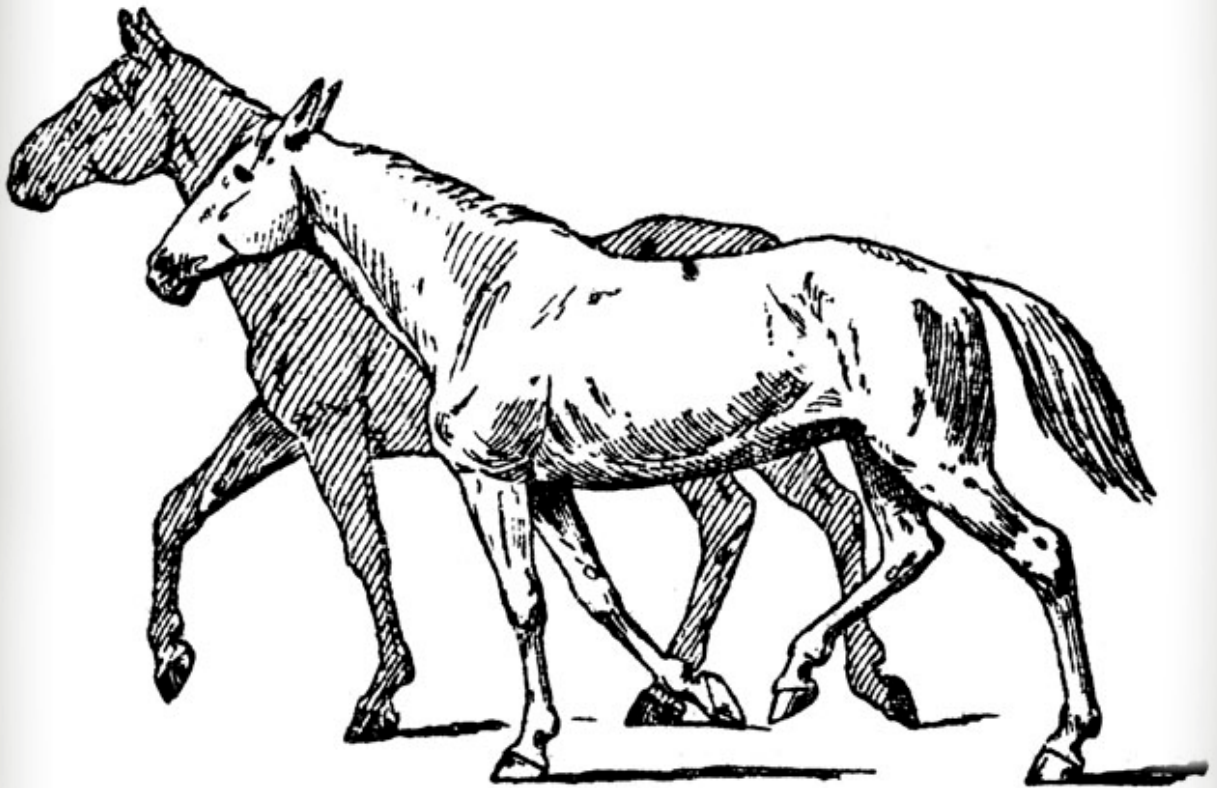


Wepcuukúywit

'uus sík'em

"Horse knowledge"



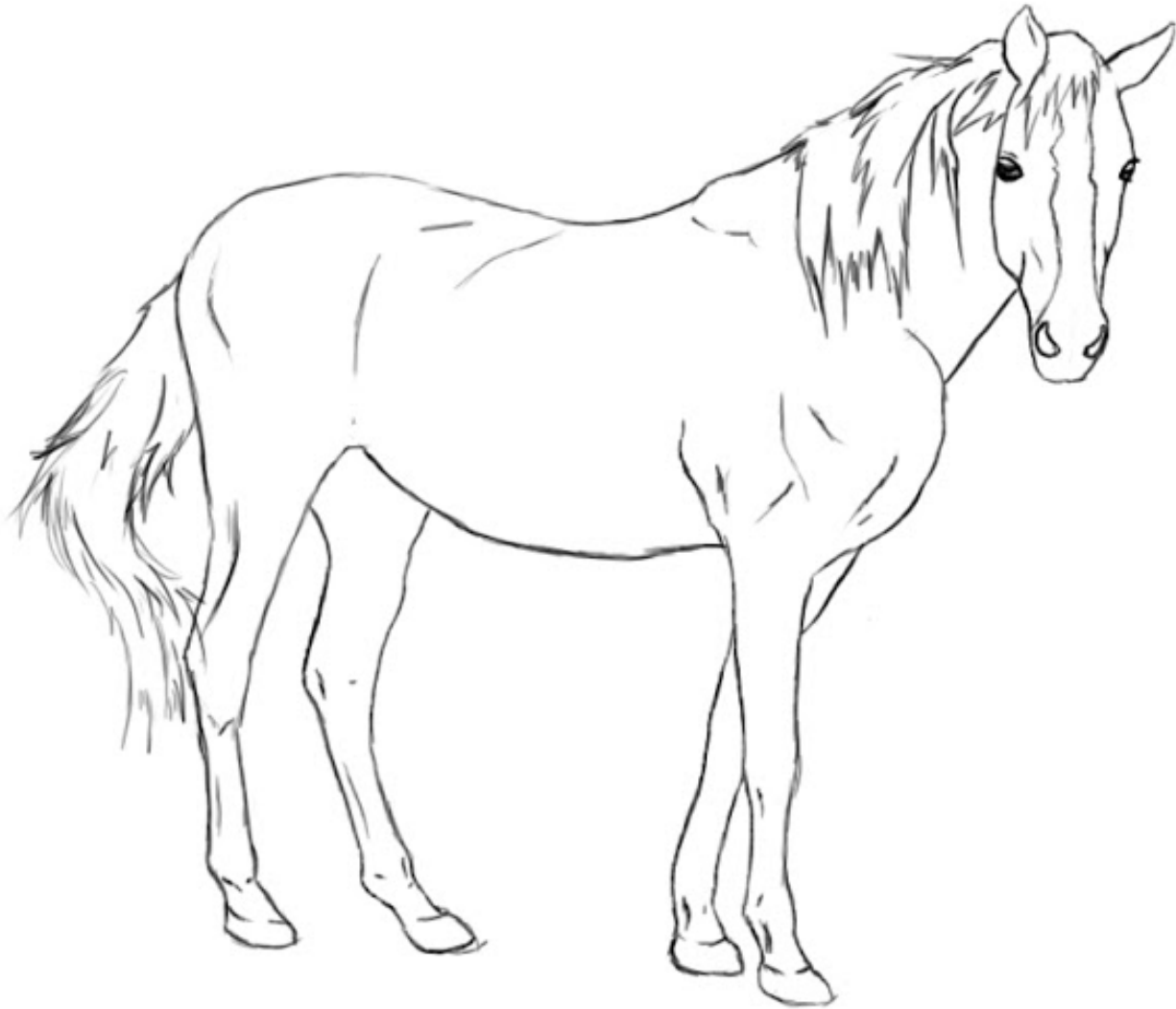
Manaa hekípe híiwes?

Yoosyóos sik’em	Bluish grey horse
Puuxpúux sik’em	Brownish grey horse
Kewxkewx sik’em	Palomino colored horse
Taqo’waako’s sik’em	Dark buckskin horse
Pípuuy sik’em	Grey horse
‘ilp’ilp sik’em	Light bay horse
Húusus ‘ilp’íl p sik’em	Roan horse
Tóowatooyin’ sik’em	White-footed horse
‘ilapáaqin’ sik’em	Buckskin or light bay horse
‘ipéetk’uykin’ sik’em	Horse with a black streak on its face
‘ipáaliwla’ckin	Horse with white spot on its head
Suk’uysuk’uy sik’em	Dark bay color horse
Téemsilpin’	Spotted (as in an appaloosa)

Manaa ‘ee kuuse?

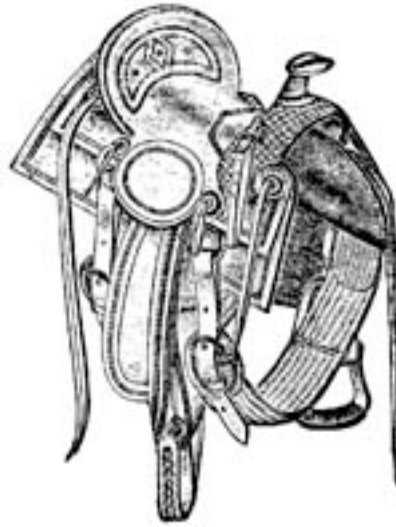
hiyáalaca sik’émne	I am rounding up the horses.
wesítkse sik’émne	I am putting a halter on the horse.
‘etélkeke’ykse sik’émne	I am leading the horse.
‘etéelkelikse sik’émne	I am tying the horse.
Sapa’saapa’síisa sik’émne	I am saddling the horse.
‘enkéewtelikse sik’émne	I am untying the horse.
Wéecese sik’émne	I am riding a horse.
Wúuleke’ykse sik’émne	I am riding a horse at ambling speed.
‘ine’énpse wacwacnóona	I am holding on to the saddle horn.

Sik’émnim Ciláakt



‘éxyew	Mane	‘ilúut	Stomach
Húusus	Head	Húhuy	Shoulder
Mac’áyo	Ears	T’íican	Rump
Sílu	Eyes	Tu’úynu	Tail
P’in’íises	Nose	Wéeyux	Legs
Him’	Mouth	Péeyu	Hoof
Yéhet	Neck	Sik’émnim ‘ús	Horse shoe
K’úp’up	Back	‘iléepqet	

‘ituu hiwees?



Sapo’saapós	saddle
Temewn’i	Saddlebag
Sahy’áayn	Saddlecloth, saddle blanket
‘ilóotayn	Saddle girth, cinch
wacwácno	Saddle horn
Tewíisin’ sapo’saapós	Horned saddle
Sik’emnim temúuxpe	Horse track
Walisko’s	Horse whip
ᶑaxáani’	Bag tied to horse’s strap
Him’pay’ayn	Bit (for horse’s mouth)
‘isaapó’osna	A strip of hide used as a holder or handle on quiver, horse-packing gear

Manaa hekípe híiwes?

Match the Nimipuutímt phrase to the correct Sooyapootímt phrase.

Tóowatooyin' sik'em	Bluish grey horse
Kewxkewx sik'em	Brownish grey horse
'ilapáaqin' sik'em	Palomino colored horse
Suk'uysuk'uy sik'em	Dark buckskin horse
Puuxpúux sik'em	Grey horse
Pípuuy sik'em	Light bay horse
Téemsilpin'	Roan horse
Yoosyóos sik'em	White-footed horse
Húusus 'ilp'íl p sik'em	Buckskin or light bay horse
'ipéetk'uykin' sik'em	Horse with a black streak on its face
'ipáaliwla'ckin	Horse with white spot on its head
Taqo'waako's sik'em	Dark bay color horse
'ilp'íl p sik'em	Spotted (as in an appaloosa)

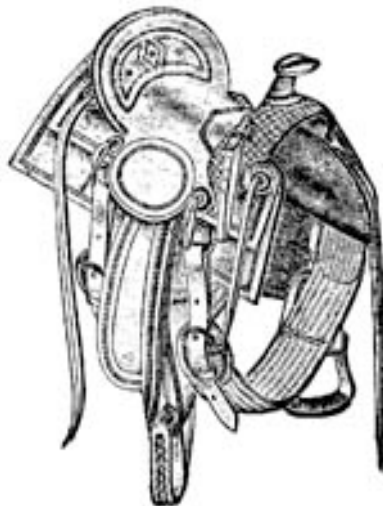
‘ituu hiwees?

Match the Nimipuutímt phrase to the correct Sooyapootímt phrase.

Sik’emnim temúuxpe	Saddle
wacwácno	Saddlebag
ᖃᖃáani’	Saddlecloth, saddle blanket
Walisko’s	Saddle girth, cinch
Him’pay’ayn	Saddle horn
Temewn’i	Horned saddle
‘isaapó’osna	Horse track
‘ilóotayn	Horse whip
Sahy’áayn	Bag tied to horse’s strap
Sapo’saapós	Bit (for horse’s mouth)
Tewíisin’ sapo’saapós	A strip of hide used as a holder or handle on quiver, horse-packing gear

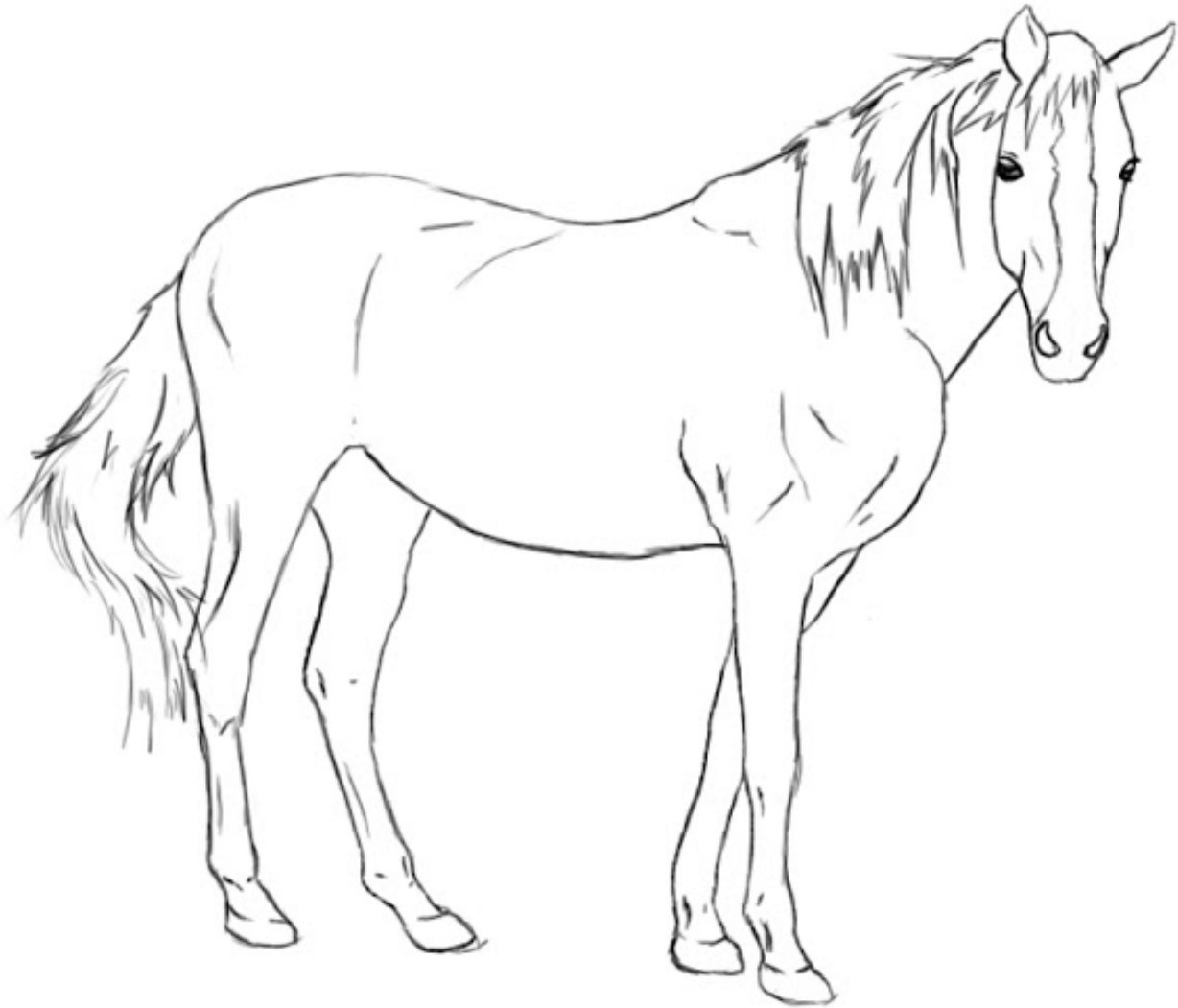
.....

Label the saddle with the appropriate Nimipuutímt phrases. Some objects are not pictured so label the place they belong.



Sik’émnim Ciláakt

Label the body parts Nimipuutímtki.



T’íican	Húusus	Mac’áyo
P’in’íises	húhuy	Yéhet
Wéeyux	Sílu	Tu’úynu
‘éxyew	Him’	Péeyu
Sik’émnim ‘úus ‘iléepqet	K’úpk’up	‘ilúut

‘inim wen’íkt wees _____

Calawí sepehitemenewet hihice

“‘etélkekeyx!”

‘iin hice

“ ‘eehé’ ‘etelkeke’ykse sik’émne.”

The following questions create a basic dialogue for riders to introduce themselves.

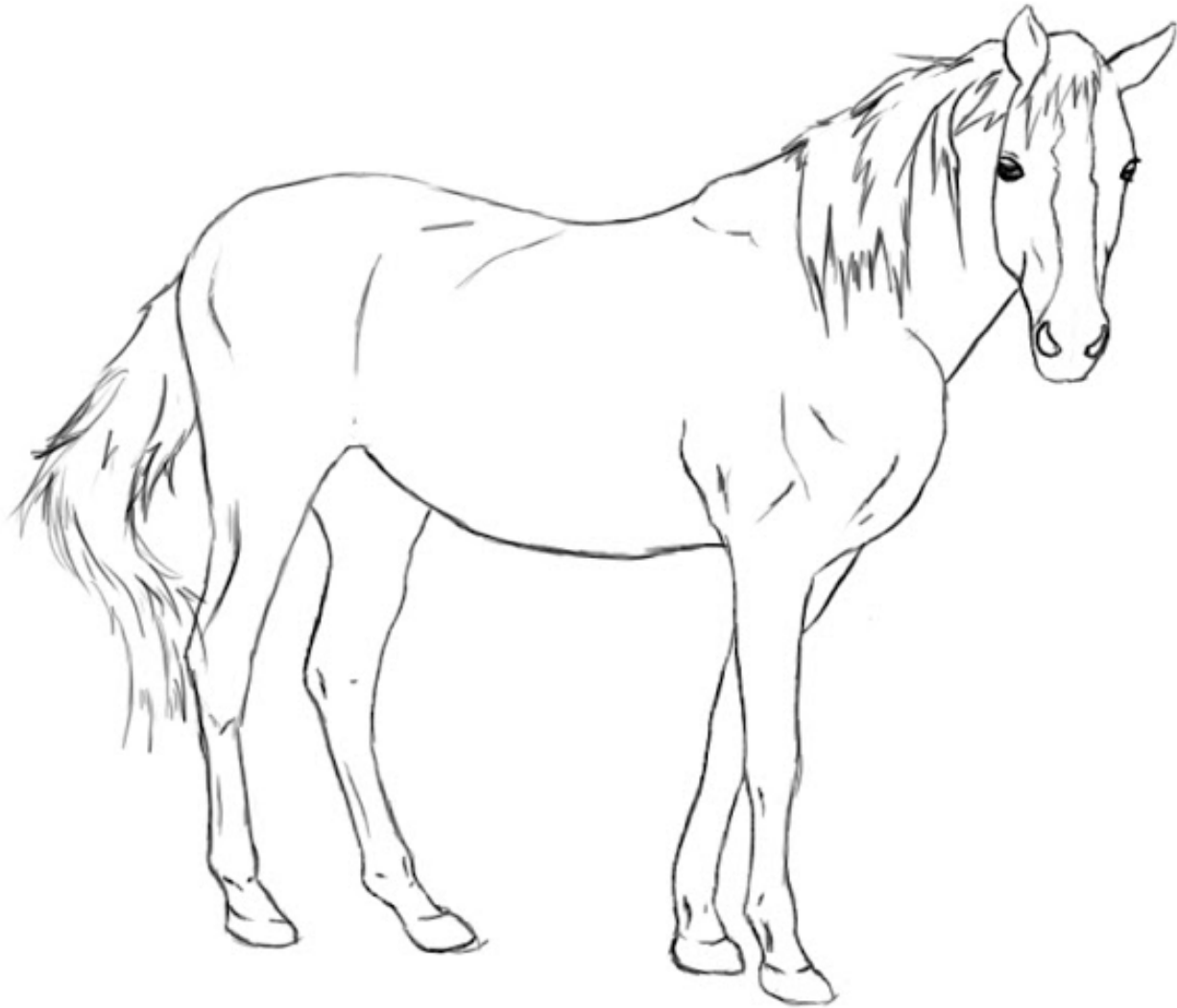
‘isíi ‘ee wees?

‘isíi híiwes? (*This refers to your horse*)

Manaa hekipe híiwes?

Manaa ‘ee kuuse?

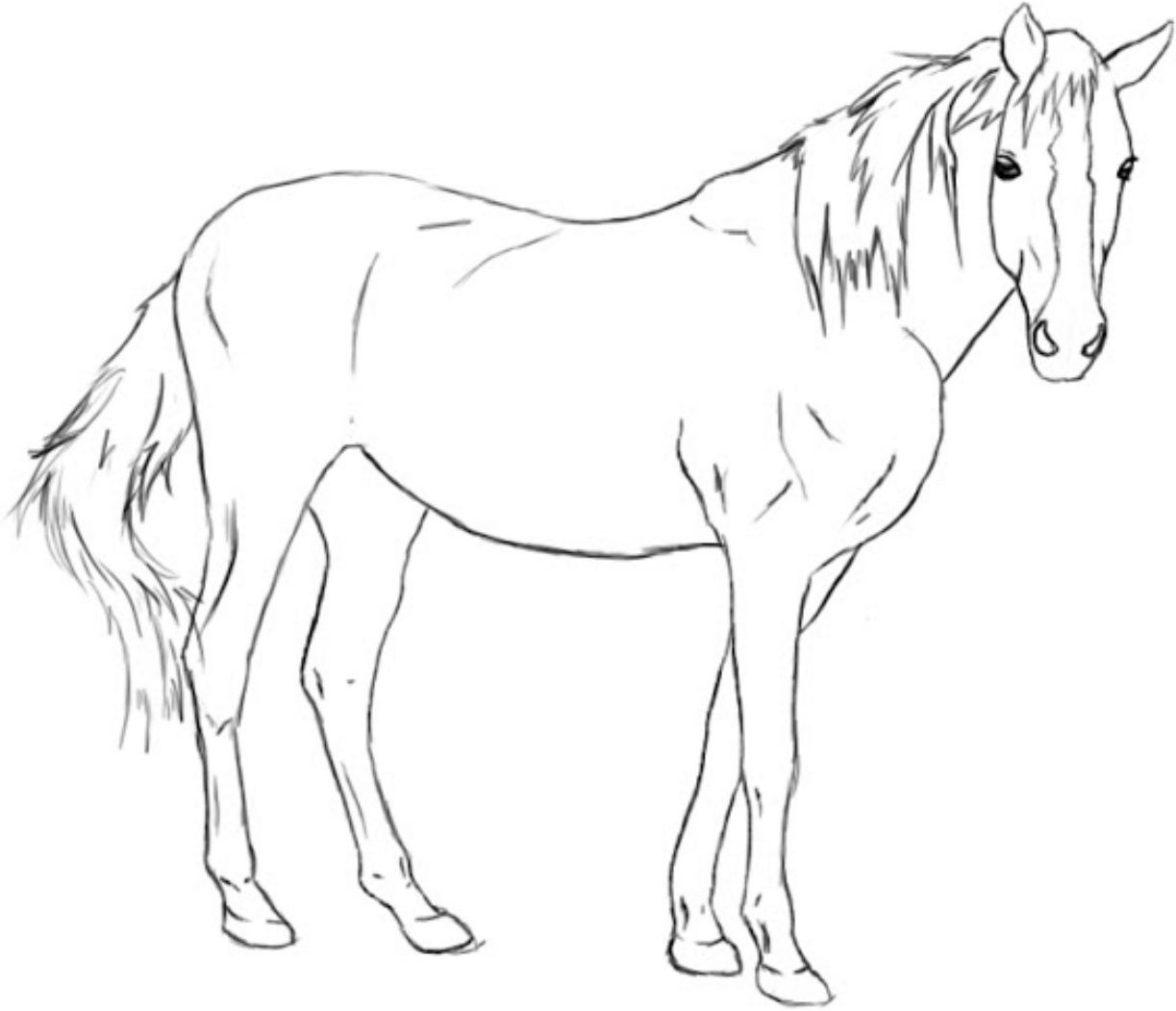
Sik'éemnim Ciláakt



Siwé	Forhead	Tin	Chin
Mastay	Cheek	Qahas	Breastplate
Tit	Tooth	Tupec	Ribs
Pews	Tongue	Tiks	Hips

Sik’émnim Ciláakt

Label the body parts Nimipuutímtki.



Tiks

Tin

Tupec

Siwé

Tit

Pews

Qahas

Mastay

‘ínim nexce’éce

Terms for family members have two forms. The first form, found in bold print, is the term used to refer to that individual. The ne-/na- indicates “my”. This is the term you will use in your introduction. The second form is the term used only when speaking to that person.

Ne’íic	My mom
‘íice	Mom
Na’qaac	My maternal grandma, my mom’s mom
Qaaca’	Grandma
Na’plaḡ	My maternal grandpa, my mom’s dad
Pilaqa	Grandpa
Na’toot	My dad
Toota’	Dad
Ne’el	My paternal grandma, my dad’s mom
‘éele’	Grandma
Na’qalac	My paternal grandpa, my dad’s dad
Qaláca	Grandpa

‘isíime nexce’ece hiwsíix?

'inim wen'íkt wees _____

The following questions create a more advanced dialogue for riders to introduce themselves.

'isíi 'ee wees?

'isíime nexçe'ece hiwsíix?

'isíi híiwes? (*This refers to your horse*)

Manaa hekipe híiwes?

Manaa 'ee kuuse?
